

3 Disassembly and Reassembly

This section of the service manual describes the disassembly and reassembly procedures for the MO15E* monitors.

WARNING: This monitor contains electrostatically sensitive devices. Use caution when handling these components.

3-1 Disassembly

Cautions: 1. Disconnect the monitor from the power source before disassembly.
2. Follow these directions carefully; never use metal instruments to pry apart the cabinet.

3-1-1 Main Body Disassembly



1. Locate the monitor on the table with face down.



2. Loosen the snaps of Hinge cap through the slot of Cover Rear.



3. Remove the hinge cap.



4. Remove 2 flat head screws on the hinge mounting.
Do not remove the screw for cable clamp.



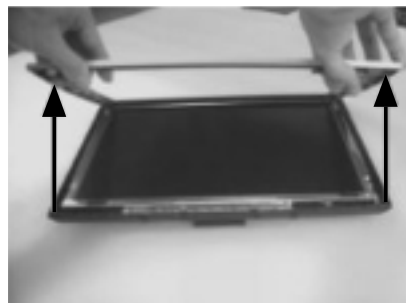
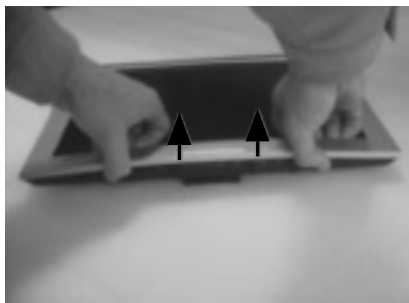
5. Disconnect the stand cable from socket and remove stand assembly.



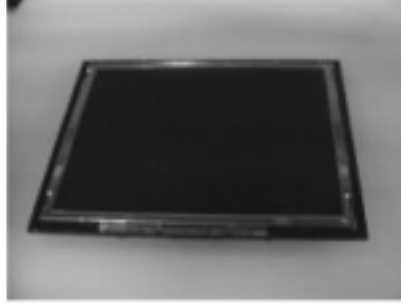
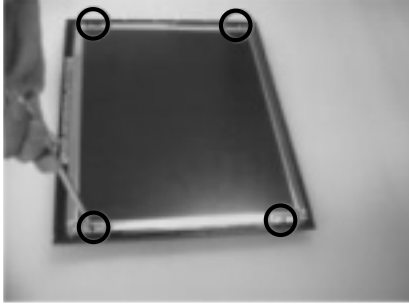
6. Remove 2 screws of Cover Rear.



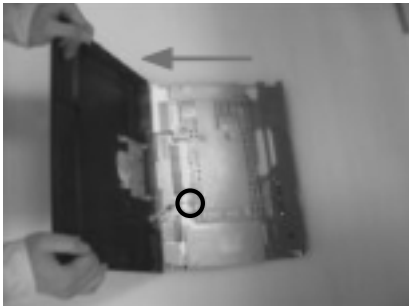
7. Turn the monitor for front-side up.



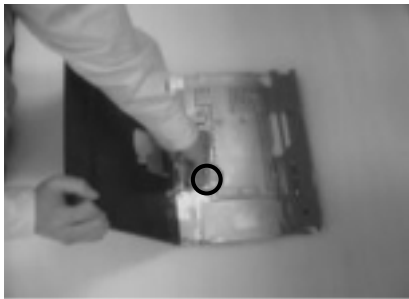
8. Remove the Cover Front by pulling the center area of bezel and side area in sequence.
If the side area is not loosened easily, open the snap using '-' driver at the corner of slot of Cover Rear.



9. Remove the 4 screws of panel.



10. Turn the monitor for face down and open the Cover Rear from top area.

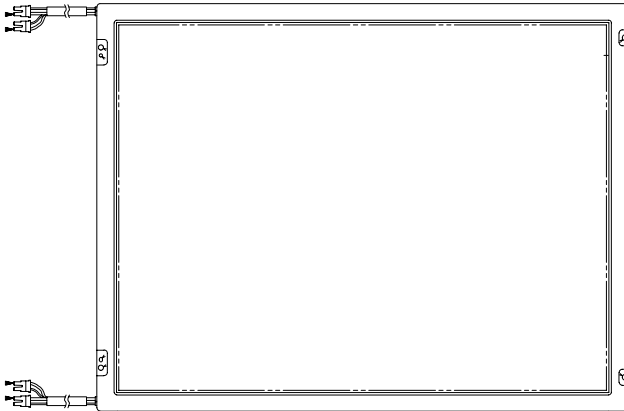


11. Disconnect the function cable from the connector of main board.

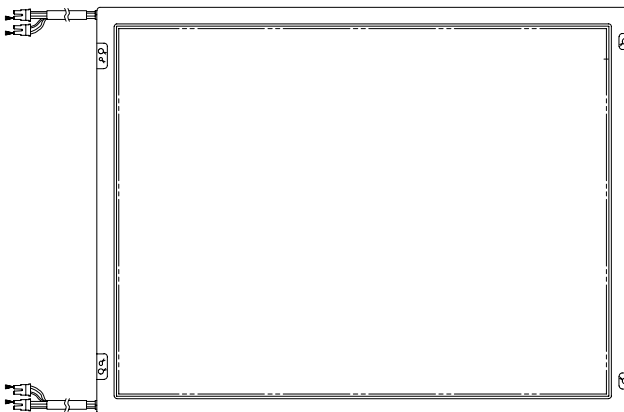


12. Remove the 3 screws of shield.

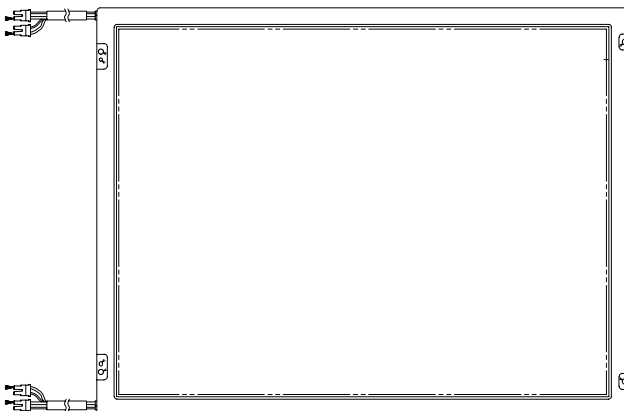
3-2 Replacement Order of Lamp Assemblies



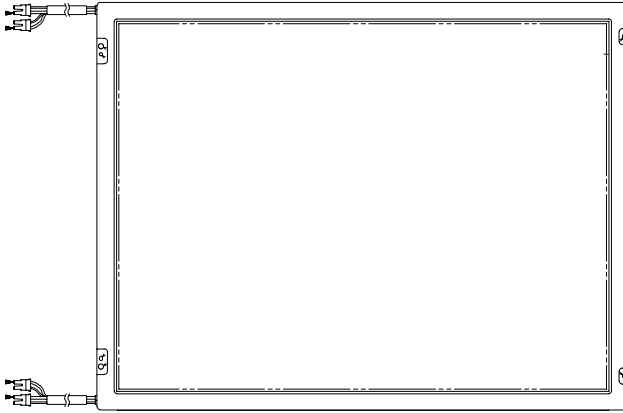
1. After confirm there is nothing on the disk
Turn the LCD module over
and put it on a flat desk set to
the ground.



2. Remove the screw and slide
the lamp unit.



3. Please take out the lamp
unit from the LCD
module.



4. Please fix the new lamp units on the LCD module : opposite process 2 and 3

* Replacement of lamp unit should be done at the power off state and recommended clean bench condition.

3-3 Reassembly

Reassembly procedures are in the reverse order of Disassembly procedures.

Memo